

## The Northern or Sumerian foot

I had so much material to reveal in this book that I scarcely knew where to begin. I decided to start with that first profound numerical shock I experienced in 1977. The Sumerian, Anglo-Saxon, or Northern foot of 13.2 Imperial inches has continued to fascinate me ever since. Was this archaic measurement based on a much taller ancient race?

Certainly the evidence of 'King Arthur's footprint' at Tintagel would appear to suggest that our distant ancestors were a good bit bigger than we are today. So I was surprised and delighted to discover mention of this ancient measurement in John Michell's book *City of Revelation*, when I finally managed to get hold of a copy during the early part of the nineteen eighties. John Michell indicated a number of fresh areas of confirmation for the measure itself:

*"...the appropriate unit here is the Sumerian foot. This has been accurately defined from the graduated tablet known as Gudea's Rule, now in the Louvre; Berriman in 'Historical Metrology' gives the value of the Sumerian foot as 13.2 inches or 1.1 English feet..."*

**John Michell - *City of Revelation* - Abacus (1969)**

Consequently, back in 1977, when he first brought this measurement to my attention, the Magician had given me both the correct dimensions and the right name. It is interesting that this gauge has been confirmed as being Sumerian, as well as Anglo-Saxon and Northern, for it must surely indicate there was once a worldwide measuring system, which existed in the distant past? I am constantly amazed how many Earth Mysteries researchers never appear to use the Sumerian foot in their calculations, instead utilising metric computations.

In historical terms, the metric linear measuring system is comparatively recent. Furthermore, it is an abstract concept that has nothing whatsoever to do with people, or their 'divine' proportions. How are we to ever understand the entire spectrum of archaic, mystical, numerological subtleties if we do not use ancient measurements? I will wager those of you of my generation, remember the bizarre measures we were forced to learn at school? Peculiar things like 'rods, poles and perches' became an intimate part of our school days and yet we always thought of them as a load of old rubbish. Have a look at some of my 'revised' linear measurement tables and I am sure you will begin to see how mistaken we were.

I was astonished to discover that those old measures were anything but nonsense; in fact they held the key to something quite astonishing. I believe that our previous Imperial system was based on a much older and slightly larger classification of linear measurement, which had been around for a good many millennia, certainly from the time of the Sumerians (or perhaps even earlier?) involving a system that had a base unit of 60. The

current archaeological dates for the earliest Sumerian period are approximately 3,600 - 4,000 BC, which makes this ancient scheme of linear measure well over 5,000 years old.

On detailed examination the old Imperial Linear Measures table suggests that the entire system was originally based on a much larger foot. I believe it was the Sumerians who set up this earlier linear structure as they counted in sixties and six hundreds. Look out for these numbers and their multiples in the following tables of measurements. At the same time you have to ask yourself why the ancient classification of measures changed.

## TABLES OF REVISED LINEAR MEASURES

### Imperial Linear Measures

1 League = 3 miles  
 1 Mile = 8 furlongs  
           = 80 chains  
           = 320 rods  
           = 1760 yards  
           = 5280 feet  
           = 63360 inches

---

1 Furlong = 10 chains  
            = 40 rods  
            = 220 yards  
            = 660 feet  
            = 7920 inches

---

1 Chain = 4 rods  
           = 22 yards  
           = 66 feet  
           = 100 links  
           = 792 inches

---

1 Rod = 5.5 yards  
         = 16.5 feet  
         = 25 links  
         = 198 inches

---

### Sumerian Linear Measures

= 3 miles  
 = 8 furlongs  
 = 80 chains  
 = 320 rods  
 = 1600 yards  
 = 4800 feet  
 = 57600 inches

---

= 10 chains  
 = 40 rods  
 = 200 yards  
 = 600 feet  
 = 7200 inches

---

= 4 rods  
 = 20 yards  
 = 60 feet  
 = 100 links  
 = 720 inches

---

= 5 yards  
 = 15 feet  
 = 25 links  
 = 180 inches (3 × 60)

---

### Imperial Linear Measures

1 yard = 3 feet  
= 36 inches

### Imperial Linear Measures

1 foot = 12 inches  
1 link = 7.92 inches  
  
1 'Sumerian' inch = 1.1 Imp. ins.  
1 'Sumerian' foot = 13.2 inches  
= 1.1 Imp. feet  
1 'Sumerian' cubit = 19.8 inches  
= 1.65 feet

---

### Area Measures

#### Imperial Linear Measures

1 square 'Sumerian'  
Cubit =  $1.65 \times 1.65$   
= 2.7225 sq. ft  
  
1 square pole = 30.25 sq. yds.  
= 272.25 sq. ft  
= 39204 sq. ins.  
  
16 sq. poles = 1 **sq. chain**  
= 484 sq. yds  
= 4356 sq. ft  
  
40 square poles = 1 **Rood**  
= 1210 sq. yds.  
= 10890 sq. ft  
  
4 Roods = 1 **acre**  
= 4840 sq. yds.  
= 43560 sq. ft  
  
1 square Mile = 3,097,600 sq. yds

### Sumerian Linear Measures

1 Sum yard = 3 feet (3.3 Imp)  
= 5 links  
= 36 ins (39.6 Imp)

### Sumerian Linear Measures

1 foot = 12 inches (13.2 Imp)  
= 7.2 inches  
  
= 1 inch  
= 3 barleycorns  
= 12 inches  
= 1 foot  
= 18 inches  
= 1.5 feet

---

#### Sumerian Linear Measures

=  $1.5 \times 1.5$   
= 2.25 sq. ft  
  
= 25 sq. yds  
= 225 sq. ft  
= 32400 sq. inches  
  
= 400 sq. yds  
= 3600 sq. ft  
  
= 1000 sq. yds  
= 9000 sq. ft  
  
= 4000 sq. yds  
= 36000 sq. ft  
  
= 2,560,000 sq. yds

You will note that with the shorter distances the actual differences in length between the two systems, Sumerian and Imperial, begin to show. The Sumerian ‘foot’ and ‘inch’ measures are all 1.1 times larger than the Imperial ones, but longer measures and distances are precisely the same. The actual numbers themselves begin to make more sense in the Sumerian table, because some of them are ‘perfect squares’ e.g.  $57,600 = 240 \times 240$ . Given the historical dates attributed to their civilisation, the Sumerian measuring system must have been in place long before the Imperial one was ever introduced. Consequently, it would seem that all the longer, linear distances actually relate to this *Sumerian* method of measurement and as a result the mile has to be very much older than the Imperial system of measures suggests. You will also note that virtually all the Sumerian measures listed above are whole numbers.

Let us now relate some of the above-mentioned area measures to the ‘squared’ Sumerian Cubit or, perhaps we might call it, the ‘Megalithic Yard’? ( $1.65 \times 1.65 = 2.7225$  square feet) The figures below compare square Imperial feet with square Sumerian cubits:

<b>1 Square Pole</b>	= 272.25 square Imperial feet
Divide this by 2.7225 square feet	= 100 square Sumerian cubits
<b>1 Rood</b>	= 10890 square feet
Divide by 2.7225 square feet	= 4000 square Sumerian cubits
<b>1 Acre</b>	= 43560 square feet
Divide by 2.7225 square feet	= 16000 square Sumerian cubits

Lo and behold we are producing whole numbers here again. So let us assume for the sake of argument that this ‘square’ Sumerian cubit measure is much the same as a Megalithic linear yard of 2.7225 Imperial feet then the Megalithic ‘rod’ is apparently **2.5** times as large:

$$2.7225 \times 2.5 = 6.80625 \text{ (or } 6.1875 \text{ Sumerian ft)}$$

Perhaps we could hypothesise that the ‘megalithic yard’ and the ‘megalithic rod’ were both linear gauges as well as area measurements. Possibly, to harmonize with larger Sumerian area measures, which may have been utilised to build sacred enclosures?

Whatever the answer, I am sure my lists of revised linear measures described above will have astonished you. I guarantee that I have not tampered with anything, or ‘massaged’ a single one of these figures to suit my theories. This type of information was what I began to discover in 1977 and I was as dumbfounded then as you probably are now.

Why had I not been told this at school? Did my teachers not know about it themselves? Indeed, it seems likely that such was the case. Yet I discovered, recently, that the larger ancient Sumerian system of measures was still in use until the 18<sup>th</sup> or 19<sup>th</sup> centuries!

If you should doubt the veracity of what I am explaining to you, then let me introduce you to the words of author Colin Wilson, who described in one of his books the remarkable work of Henry Lincoln, one of the co-authors of *Holy Blood: Holy Grail*. Henry Lincoln has been working in this area of research for many years:

*“Why the mile? In a chapter called ‘The Measure’, Lincoln lays out some curious but highly convincing facts. The French metre, which came into use in 1791, was one/10,000,000th of the distance from the North Pole to the Equator. Lincoln shows that an old English measure called the rod, pole, or perch (which is one-320<sup>th</sup> of a mile) is also, in a more primitive version, which Lincoln calls the Cromlech Pole, a precise measure of the earth’s surface... When this ancient pole (198 inches) is multiplied by 1.618, phi, using the Golden Section, the result is 320, the number of poles in 1 mile...”*

**Colin Wilson - *The Atlantis Blueprint* - Little, Brown (2000)**

Both these diligent researchers appeared to overlook the existence of the Sumerian foot, to my way of thinking an even more accurate, ancient measure than the comparatively modern French metre. It is my contention the ‘metre’ should have been calculated to equal 3·3 Imperial feet (not 3·2808ft); or to be more precise 3 Sumerian feet, as it relates to the shape of a larger Sumerian ‘man’, as well as to the planet itself!<sup>1</sup>

These remarkable, historical measurements did not stop with basic linear distances; they proved to be a little more complicated than that. I considered that the magical numerical quality of the megalithic yard - 2·7225 imperial feet - held yet another secret and I was not to be disappointed. Working with a calculator is an acquired taste and during the nineteen seventies and eighties I became quite a ‘number crunching nerd’, driving all my friends and family mad. Nevertheless, it was a necessary part of the quest. Through countless hours of punching numbers I began to see patterns emerging and one of the strangest was what I have come to call

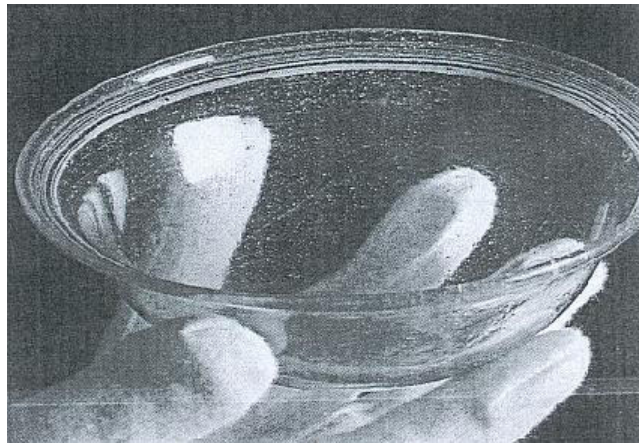
---

<sup>1</sup> See chapters on Human Octave and Vitruvian Man

‘mystical fractions’.

At this point I suggest you read over the material I have already discussed two or three times before advancing any further into this book. There is an awful lot here to take in. Remember, I had the benefit of days, months and years between each revelation, which you, dear reader, do not. The average human brain can only stand so much stimulation before it yells for you to **‘STOP!’**

I recommend you put the kettle on and make yourself a hot drink and think about what you have just read, and then think about it a whole lot more. Eventually perhaps, you will begin to get a little cross, like I did. Then I suggest you pose the leading question - why has this ancient system been ignored, undermined, ridiculed and hidden for so many years?



All the measures I have listed here begin to indicate how our distant ancestors must have been far more intelligent than ‘Authority’ would ever have us believe. Similarly, the picture revealed above shows a remarkably fine glass bowl dating from the period known as the ‘Dark Ages’ in Britain. (*Looks rather like a modern Pyrex dish does it not?*) Apparently, it was found in a Byzantine burial bucket, which was originally located on the edge of the New Forest in Hampshire. It is thought to be at least 1,500 years old and perhaps Anglo-Saxon in origin. Does it look like the product of mindless barbarians, or heathens? It is regarded as a unique find and is kept in the English Heritage’s Centre for Archaeology in Portsmouth. This photograph is reproduced from the *Evening Standard* April 18<sup>th</sup> 2002.

Ironically, it was only 150-200 years ago that the Sumerian civilisation resurfaced from the mists of time and yet their revealed measurements confirm the existence of a very ancient system of linear dimensions.

I learned another astonishing fact in the Encyclopaedia Britannica and that is: The *Speed of sound* increases by 1.1 ft (13.2 inches - an Anglo-Saxon, Northern, or Sumerian foot) for every degree Centigrade rise in temperature and pressure. So what precisely did those ancients know that we have forgotten?

‘Conspiracy theory’ as a useful label to pin on any new ideas the ‘Establishment’ wishes to undermine, or revelations that it does not want taken seriously and to this end I believe there were massive conspiracies and cover-ups during the seventeenth, eighteenth and nineteenth centuries. Throughout that misbegotten epoch all memory of the ancient, sacred measures mentioned above was muddied and eventually ‘erased’. I hope together we might intuitively find an answer as to why this was done?

It is my intention to touch on each one of the Mage’s mathematical revelations in a gentle way throughout this book. Consequently, the flow of the narrative may well be a little ‘erratic’ from time to time as we stop off *en route* to taste the various flavours of the numerical cocktails the Magician presented to me over the last thirty years.